



Steel Fire-rated Doors and Multi-purpose Doors

A reliable partner for your safety

HÖRMANN



Contents



Steel Fire-rated Doors and Multi-purpose Doors	4-5
Steel Fire-rated Doors HC 90 CCC	6-7
Steel Fire-rated Doors HC 60 CCC / HC 30 CCC	8-9
Steel Multi-purpose Doors HMS	10-11
Surface	12-13
Glazing and Top Elements	14-15
Hardware Fittings	16-17
Frame Types and Installation	18



Hörmann products are manufactured strictly according to the Chinese Quality Management System GB / T 19001 - 2008 / ISO 9001:2008 and certified by ISO 14001 : 2004 Environmental Management System.

Steel Fire-rated Doors and Multi-purpose Doors

A whole range of well-made doors to meet your needs



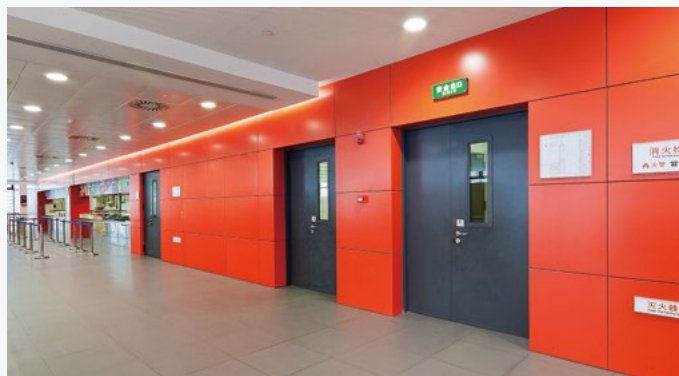


Steel fire-rated doors are certified according to Chinese Standard GB12955-2008, and gain the CCC authentication

According to the implementation rules of China's "Mandatory Products Authentication for Fireproof Products", all fire-rated doors produced and sold after September 1, 2015 must obtain CCC certification.

Hörmann Beijing Door Production Co., Ltd. is among the first steel fire-rated door manufacturers in China, having met or exceeded relevant tests and inspections.

Once again Hörmann performs well in quality and technology.



Take advantage of our achievements gained through decades of experience. By using Hörmann fire resistant doors, you are guaranteed with decades of quality, protection and safety. All Hörmann fire resistant doors meet Chinese Standards and are designed, produced, and serviced strictly adhering to ISO 9001 requirements. Install Hörmann steel fire-rated doors with complete confidence on safety.

In addition, Hörmann doors offer an artistic appearance. This is particularly important where it is necessary to fit doors with varying dimensions on the same floor of a building. Offering both aesthetics and good fire protection allows Hörmann to satisfy the needs of architects, developers, and authorities, etc. Thus, Hörmann steel fire-rated doors are often the ideal options in the fire areas of industrial and public buildings, apartment compounds, hospitals and airports.



Hörmann steel multi-purpose doors are the hallmark for high reliability and long-term value in a wide range of internal and external applications.

These construction elements offer long-term functional reliability from our usage of fine materials and precision manufacturing. As steel doors, they can be used in those areas where robust door solutions are required: in non-fire areas of industrial buildings, commercial enterprises, public buildings and agricultural sectors. Regardless of the scale of the construction project, Hörmann is able to provide an individual solution to satisfy your diverse needs.

Steel Fire-rated Doors HC 90 CCC

Fire and heat insulation time about 90 minutes



Hörmann steel fire-rated doors are infilled with fireproof boards providing better fire and heat insulation performance. The fireproof expansion strip at all round of the door leaf effectively blocks the spread of smoke. Door leaf can be fitted with fireproof glazing and anti-panic functions when required, and is widely used in the fire areas of construction zones.



Rebated door leaf with flush appearance

Door leaf thickness
70 mm



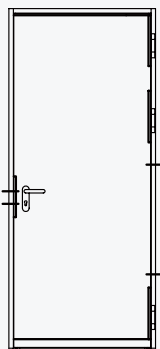
All Hörmann steel
fire-rated doors meet
CCC authentication.

T90

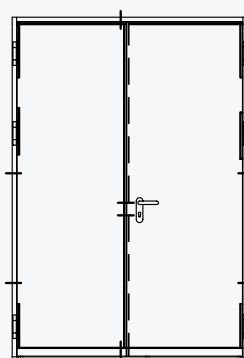
Fire-rated Class A

dB

Sound insulation
38 dB



HC 90 CCC - 1



HC 90 CCC - 2

Steel fire-rated door

Class A

HC 90 CCC

Standard Fittings

Fire and heat insulation time in hours	1.5
Leaf thickness	70 mm
Leaf steel thickness	0.8/1.0* mm
Frame steel thickness	1.5/2.0* mm
Frame thickness	114/150* mm
Infill	Fireproof board
Lock	Fireproof lock
Handle set	Satin stainless steel D-110
Hinge	3D-160 adjustable

Locking bolts

Single-leaf door	2
Double-leaf door	4

Glazing

Fireproof glazing thickness	35 mm
Max. area	15% of the door area
Max. width	≤ 280 mm
Max. height	≤ 1000 mm

Door size

W x H

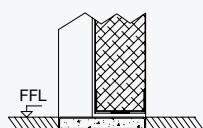
	Single-leaf	Double-leaf
Ordering width (min. - max.)	600 – 1500 mm	1000 – 3000 mm
Ordering height (min. - max.)	950 – 3000 mm	1200 – 3000 mm

* if the structural opening of single leaf door > 1000 x 2300 mm, if the structural opening of double leaf door > 2100 x 2300 mm.

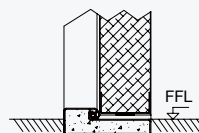
Thermal Insulation Value 1.8-1.9 W/(m²·K)

Threshold:

Two versions of thresholds can be delivered on request. Furthermore, threshold improves sound insulation. And the values of sound and thermal insulation are tested when the door fitted with threshold with seal.



Threshold flat



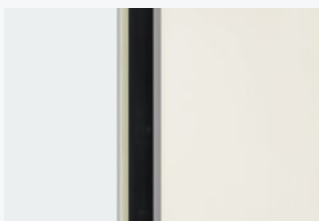
Threshold with seal

Other fittings

Surface	Page 13
Glazing	Page 15
Option fittings	Page 16-17

Steel Fire-rated Doors HC 60 CCC / HC 30 CCC

Fire and heat insulation time about 60 / 30 minutes



Fireproof expansion strip



Frame heat seal



Fireproof board



HC 60 CCC
Door leaf thickness
60 mm



HC 30 CCC
Door leaf thickness
50 mm



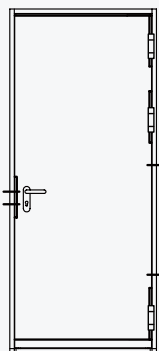
All Hörmann steel
fire-rated doors meet
CCC authentication.

T60

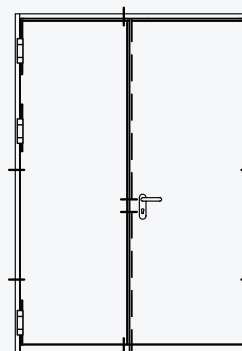
**High fire-retardant
Class B**

T30

**High fire-retardant
Class C**



HC 60 / 30 CCC

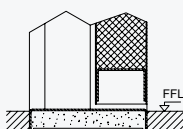


HC 60 / 30 CCC

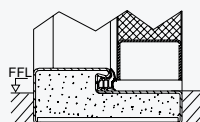
Steel fire-rated door	Class B		Class C	
	HC 60 CCC		HC 30 CCC	
Standard Fittings				
Fire-insulation time in hours	1		0.5	
Leaf thickness	60 mm		50 mm	
Leaf steel thickness	0.8 mm		0.8 mm	
Frame steel thickness	1.5 mm		1.5 mm	
Frame thickness	114 mm		100 mm	
Infill	Fireproof board		Fireproof board	
Lock	Fireproof lock		Fireproof lock	
Handle set	Satin stainless steel D-110		Satin stainless steel D-110	
Hinge	Heavy duty hinge		Heavy duty hinge	
Locking bolts				
Single-leaf door	2		2	
Double-leaf door	4		4	
Glazing				
Fireproof glazing thickness	28 mm		28 mm	
Max. area	15% of the door area		15% of the door area	
Max. width	≤ 280 mm		≤ 280 mm	
Max. height	≤ 1000 mm		≤ 1000 mm	
Door size				
	Single-leaf	Double-leaf	Single-leaf	Double-leaf
Ordering width (min. - max.)	600 - 1100 mm	800 - 2100 mm	500 - 1100 mm	800 - 2100 mm
Ordering height (min. - max.)	1000 - 2300 mm	1200 - 2300 mm	820 - 2300 mm	1200 - 2300 mm

Threshold:

Two versions of thresholds can be delivered on request.



Threshold flat



Threshold with seal

Other fittings

Surface	Page 13
Glazing	Page 15
Option fittings	Page 16-17

Steel Multi-purpose Doors HMS

The right solution for diverse needs



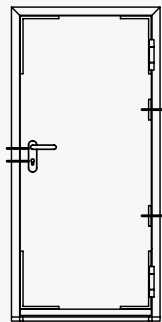
Hörmann steel multi-purpose doors are sturdy and durable while also providing better thermal and sound insulation performance. Door leaf can be fitted with not only various glazing and louver, but also special hardware and cut-outs on request, providing better solution for doors as needed.



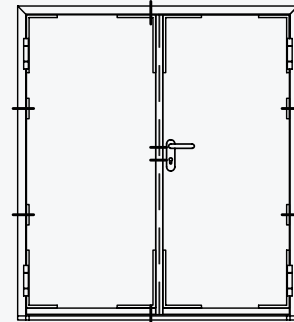
Flush door leaf
Door leaf thickness
50mm

dB

Sound insulation
Single-leaf 34 dB
Double-leaf 33 dB



HMS - 1



HMS - 2

Steel multi-purpose door

HMS

Standard Fittings

Leaf thickness	50 mm
Leaf steel thickness	0.8 mm
Frame steel thickness	1.5 mm
Frame thickness	114 mm
Infill	Mineral wool
Lock	Fireproof lock
Handle set	Black nylon D-110
Hinge	Heavy duty hinge

Locking bolts

Single-leaf door	2
Double-leaf door	4

Door size

W x H

Single-leaf door (min.)	600 x 1000 mm
Single-leaf door (max.)	1500 x 3000 mm
Double-leaf door (min.)	1000 x 1000 mm
Double-leaf door (max.)	3000 x 3000 mm

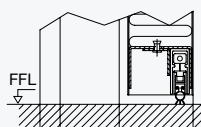
Thermal Insulation Value 2.0 W/(m²·K)

Other fittings

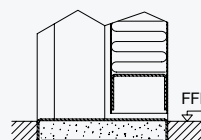
Surface	Page 13
Glazing	Page 15
Option fittings	Page 16-17

Threshold:

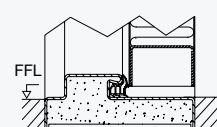
Three versions of thresholds can be delivered on request. Furthermore, threshold improves sound insulation. And the values of sound and thermal insulation are tested when the door fitted with threshold with seal.



Retractable bottom seal



Threshold flat



Threshold with seal

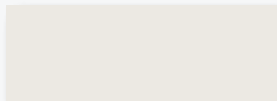
Surface

Various colours to suit diverse tastes



Powder coating surface

The smooth appearance of coating provided by the advanced powder coating line gives the steel doors a superb appearance. We offer a wide spectrum of colors to suit diverse tastes.



Standard colour RAL 9002

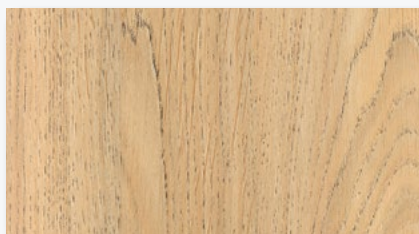


Decograin surface

Our fine Decograin film is tightly attached to the galvanized steel sheet of door leaf through an advanced heat pressed procedure. The foil-coated timber designs boast a natural-looking appearance, but also are of UV resistance, good durability and easy to maintain.



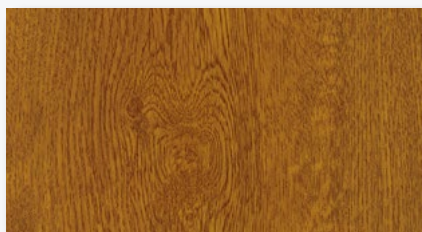
Granada Maple



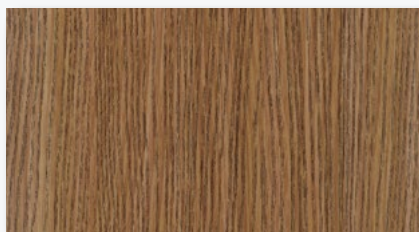
Kings Oak



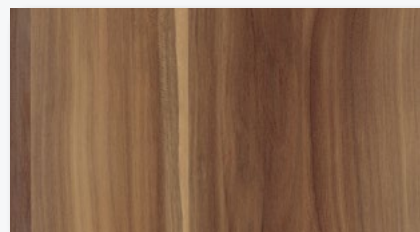
Malaga Cherry



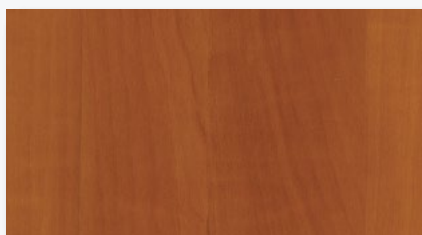
Golden Oak



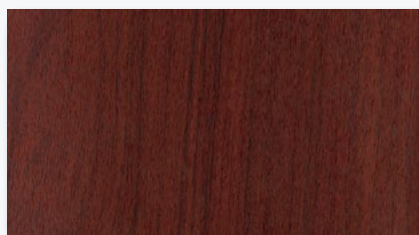
Hungary Ash Cognac



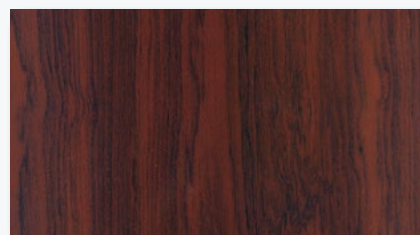
Wallis Plum Natural



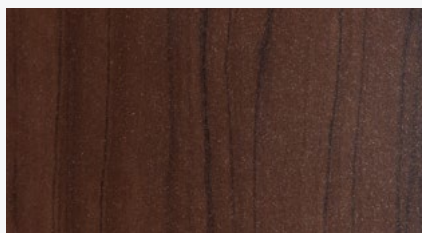
Meran Apple



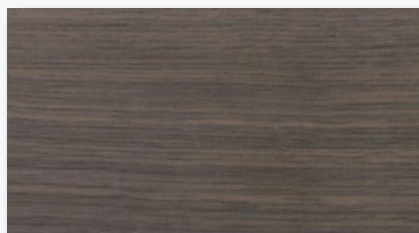
Mahogany



Dark Mahogany



Dark Sandalwood



Horizontal Gray Oak



Horizontal Dark Oak

Colours and surface finishes illustrated above are subject to the limitations of the printing process.

Glazing and Top Elements

Unlimited choices, unlimited possibilities



Glazing for steel fire-rated doors

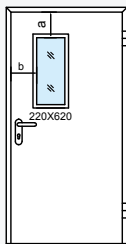


Fig. 1

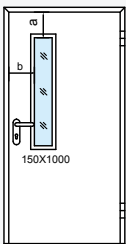


Fig. 2

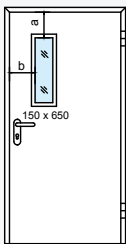
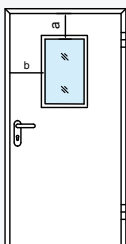


Fig. 3



Glazing to choose

Glazing for steel multi-purpose doors

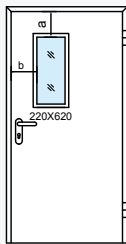


Fig. 1

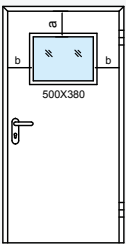


Fig. 4

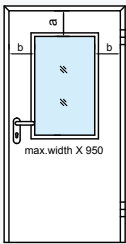


Fig. 5

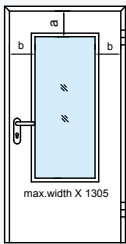
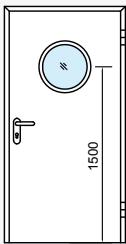
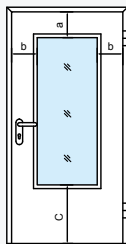


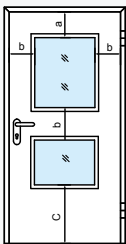
Fig. 6



Round glazing



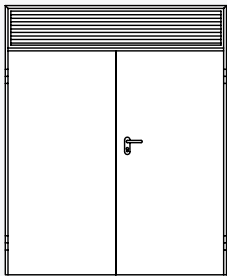
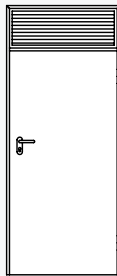
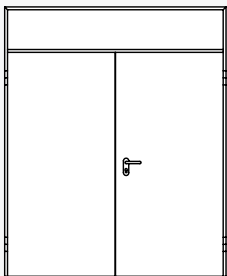
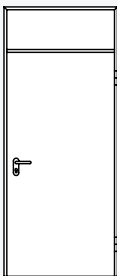
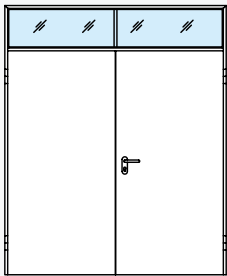
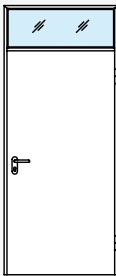
Glazing to choose



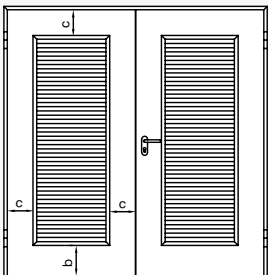
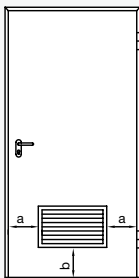
	Height of door ≤ 2100 mm	Height of door > 2100 mm
a	= 200 mm	= H - 1900 mm
b	≥ 200 mm	≥ 200 mm
c	≥ 400 mm	≥ 400 mm

Round Glazing Diameter Ø = 300 mm

Top light / panel / louver for steel multi-purpose doors *



Steel louver for steel multi-purpose doors



Please note critical dimensions below when ordering.

- a ≥ 150 mm
- b ≥ 150 mm
- c ≥ 200 mm

* Mullion will be applied if the structural opening width ≥ 2500 mm or the area of top light /top louver ≥ 2 m².

Hardware Fittings

With wide range of choices

Nylon handle*

(D-110)

Nylon handle sets can be supplied in black, red, or white.



Aluminium handle*

(D-110, D-310, D-410)

All aluminium handle sets are anodised in a natural finish.



Stainless steel handle

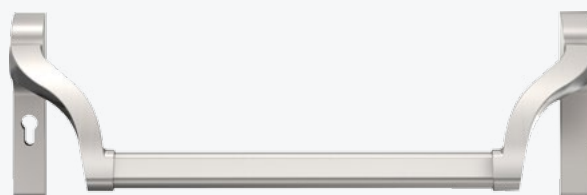
(D-110, D-310, D-410)

Stainless steel handle sets have the same design as the plastic and aluminium handle sets.



Emergency exit locks and bars

Regardless of whether single or double-leaf doors are involved, a variety of emergency exit locks and bars are available, ensuring the safety of emergency exits.



Door closer with arm

For fitting to flush and rebated door leaves with hold-open device**, fitted at opposite hinge side.



Door closer with sliding rail

For fitting to flush and rebated door leaves with hold-open device**, fitted at opposite hinge side.



Concealed door closer*

For fitting to flush door leaves with hold-open device**.

* Not available for steel fire-rated doors.

** In accordance with fire regulations, steel fire-rated doors can not fitted with door closer with hold-open function.



Cable transfer

Cable transfer can be chosen when the door is fitted with electric hardware. It is installed between door leaf and frame to protect the cable.



Electric strike

Electric strike is fitted into the strike plate to realize the access control function. It can be easily controlled by push button, card or keypad.



Door selector for double-leaf doors

Door selectors are installed for double-leaf doors to ensure that the two door leaves are closing in the right sequence.



Magnetic door stopper

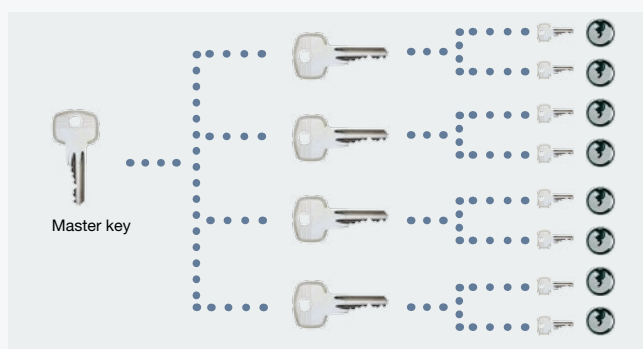


Door stopper



Electric door opener*

Imported from Germany,
Door opens and closes smoothly with push button or key card.



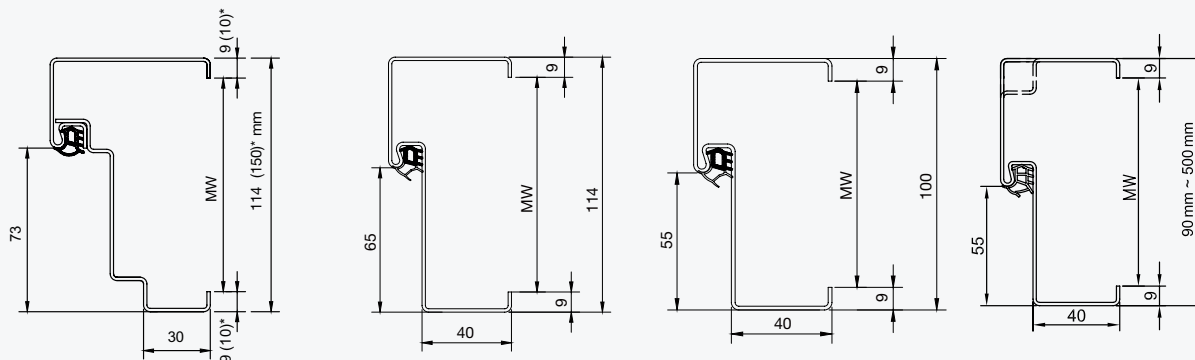
Master key system

In a master key system, the main key opens all the locks in the system although each lock has its own unique key. The size of the master key system can be supplied on request.

*Not available for steel fire-rated doors.

Frame Types and Installation

Frame versions



HC 90 CCC

HC 60 CCC

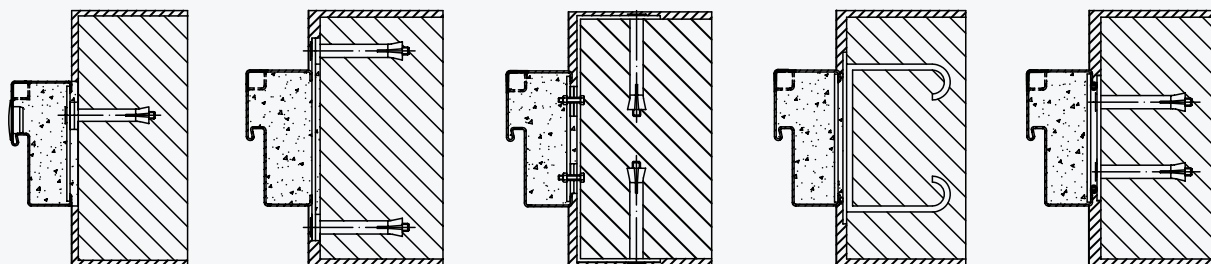
HC 30 CCC

HMS

* if the structural opening of single leaf door > 1000 x 2300 mm, if the structural opening of double leaf door > 2100 x 2300 mm.

Types of fixing

concrete block/brick walls



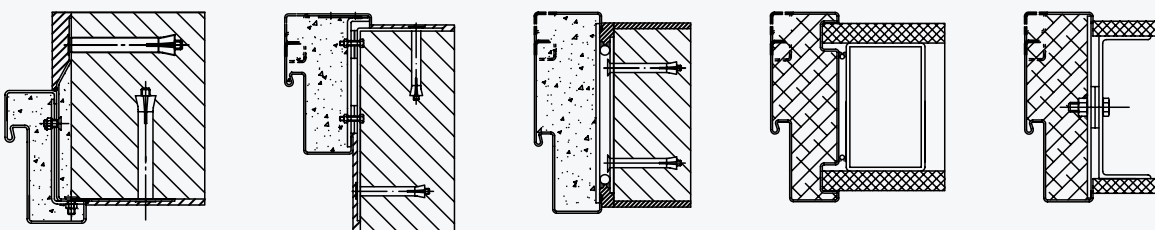
Central hole in frame
Type A

Tie plate external to frame
Type B

Double hole internal tie plate
Type C

Welded on anchor plate
Type D1

Welded with plug/screw fitting
Type D2



Corner frame connection

Opposite side
corner frame connecting

Enclosed wall
frame connection

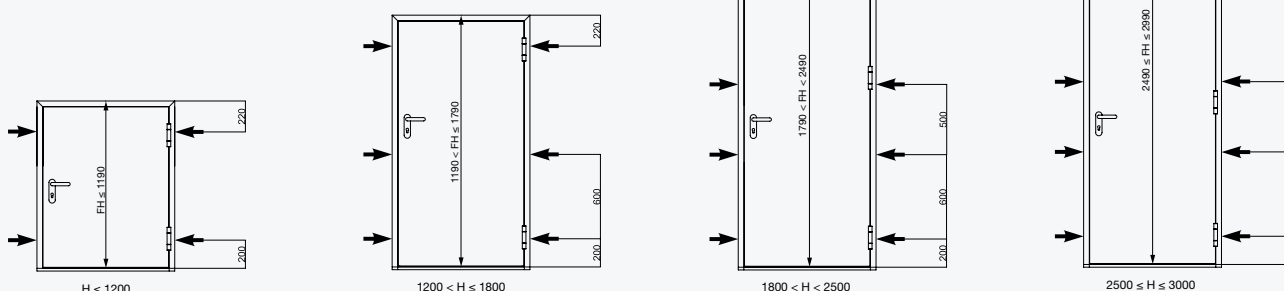
Installation onto
the gypsum board
of steel grid
Type E

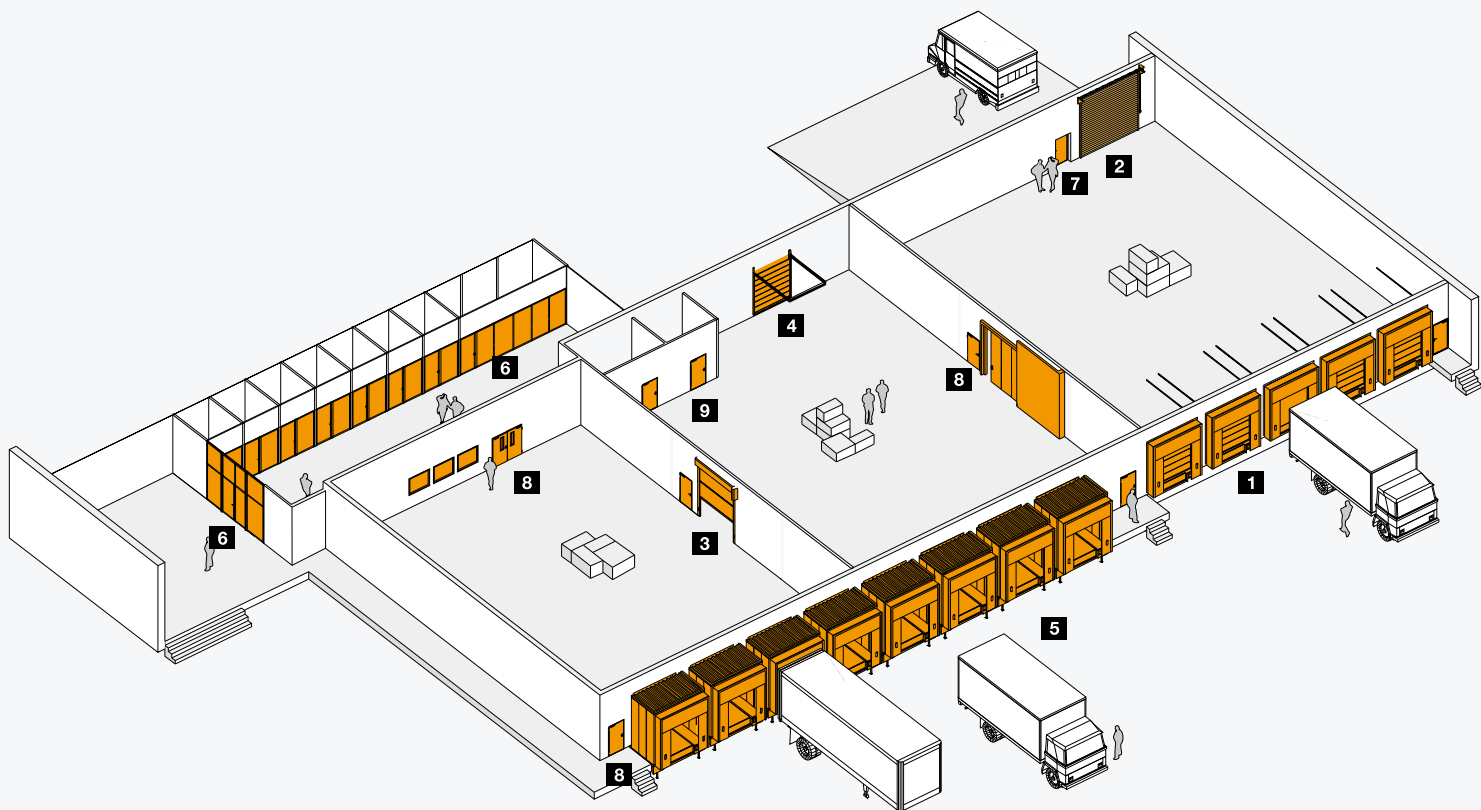
Installation onto
the gypsum board
of steel grid
Type F

Spacing of anchors

Note:

- When installing preinserts in light walls, dimensions must be calculated from the final floor level, after which the installer should first fix the preinserts (iron angle, wood block keel, or concrete block).
- Please consult technician for the position of preinserts if top/side elements are applied.





Hörmann — A Reliable Partner for Home and Industry



1. Industrial sectional doors



2. Rolling shutters



3. Flexible high-speed doors



4. High-speed sectional doors



5. Loading technology



6. Partition walls



7. Steel multi-purpose doors



8. Steel fire-rated doors



9. Steel interior doors

Hörmann: Quality without Compromise



Hörmann KG Amshausen, Germany



Hörmann KG Antriebstechnik, Germany



Hörmann KG Brandis, Germany



Hörmann KG Brockhagen, Germany



Hörmann KG Dissen, Germany



Hörmann KG Eckelhausen, Germany



Hörmann KG Freisen, Germany



Hörmann KG Ichtershausen, Germany



Hörmann KG Werne, Germany



Hörmann Alkmaar B.V., Netherlands



Hörmann Legnica Sp. z o.o., Poland



Hörmann Beijing, China



Hörmann Tianjin, China



Hörmann LLC, Montgomery IL, USA



Hörmann Flexon LLC, Burgettstown PA, USA



Shakti Hörmann Ltd., India

Hörmann is a professional manufacturer worldwide that offers you a complete range of major building products from one source.

We manufacture in specialized factories using the advanced production technologies.

The comprehensive manufacturing, sales and service network in Europe, Asia and America makes Hörmann your strong international partner for the high-quality construction.

“Quality without Compromise”.

GARAGE DOORS

OPERATORS

DOORS

PARTITION WALLS

INDUSTRIAL DOORS

LOADING TECHNOLOGY

Copyright. No part of this brochure may be reproduced without our permission. Subject to changes.

Print: 08. 2018 (Issue: 09. 2019) 1121120060
Some of the doors shown in this brochure have special features and therefore do not always represent the standard version.

www.hoermann.com

HÖRMANN